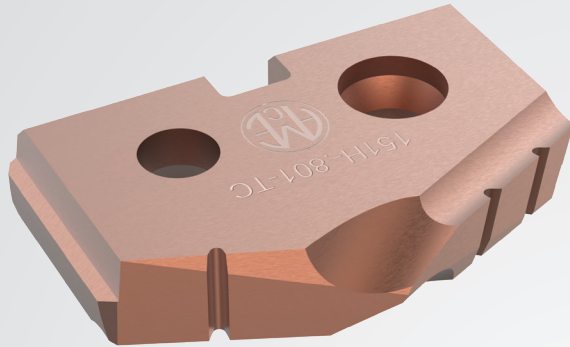




ALLIED MACHINE & ENGINEERING

Holemaking Solutions for Today's Manufacturing



TINY CHIP (-TC)

T-A® INSERT GEOMETRY

- ▶ Unique lip and point design for excellent chip control
- ▶ Improves drilling capabilities in soft, long-chipping materials
- ▶ Enhanced performance in lower-powered machines

Series	Fractional Equivalent	Ø inch	Ø mm	Part No.	
				Super Cobalt	C1 Carbide
Y	-	0.386	9.80	15YH-.386-TC	1C1YH-.386-TC
	-	0.390	9.91	15YH-.390-TC	1C1YH-.390-TC
	-	0.413	10.50	15YH-10.5-TC	1C1YH-10.5-TC
Z	-	0.451	11.46	15ZH-.451-TC	1C1ZH-.451-TC
	-	0.453	11.50	15ZH-11.5-TC	1C1ZH-11.5-TC
	-	0.492	12.50	15ZH-12.5-TC	1C1ZH-12.5-TC
	1/2	0.500	12.70	15ZH-0016-TC	1C1ZH-0016-TC
	-	0.506	12.85	15ZH-.506-TC	1C1ZH-.506-TC
	-	0.510	12.95	15ZH-.510-TC	1C1ZH-.510-TC
0	-	0.512	13.00	150H-13-TC	1C10H-13-TC
	17/32	0.531	13.49	150H-0017-TC	1C10H-0017-TC
	-	0.571	14.50	150H-14.5-TC	1C10H-14.5-TC
	37/64	0.578	14.68	150H-.578-TC	1C10H-.578-TC
0.5	-	0.610	15.50	150H-15.5-TC	1C10H-15.5-TC
	5/8	0.625	15.88	150H-0020-TC	1C10H-0020-TC
	-	0.630	16.00	150H-16-TC	1C10H-16-TC
	-	0.650	16.50	150H-16.5-TC	1C10H-16.5-TC
	21/32	0.656	16.67	150H-0021-TC	1C10H-0021-TC
	11/16	0.688	17.46	150H-0022-TC	1C10H-0022-TC
	-	0.689	17.50	150H-17.5-TC	1C10H-17.5-TC
1	45/64	0.703	17.86	151H-.703-TC	1C11H-.703-TC
	-	0.709	18.00	151H-18-TC	1C11H-18-TC
	23/32	0.719	18.26	151H-0023-TC	1C11H-0023-TC
	-	0.728	18.50	151H-18.5-TC	1C11H-18.5-TC
	-	0.734	18.64	151H-.734-TC	1C11H-.734-TC
	-	0.748	19.00	151H-19-TC	1C11H-19-TC
	3/4	0.750	19.05	151H-0024-TC	1C11H-0024-TC
	-	0.768	19.50	151H-19.5-TC	1C11H-19.5-TC
	25/32	0.781	19.84	151H-0025-TC	1C11H-0025-TC
	-	0.787	20.00	151H-20-TC	1C11H-20-TC
	-	0.801	20.35	151H-.801-TC	1C11H-.801-TC
	-	0.807	20.50	151H-20.5-TC	1C11H-20.5-TC
	13/16	0.813	20.64	151H-0026-TC	1C11H-0026-TC
	-	0.827	21.00	151H-21-TC	1C11H-21-TC
	27/32	0.844	21.43	151H-0027-TC	1C11H-0027-TC
	-	0.846	21.50	151H-21.5-TC	1C11H-21.5-TC

Series	Fractional Equivalent	Ø inch	Ø mm	Part No.	
				Super Cobalt	C1 Carbide
1.5	-	0.866	22.00	151H-22-TC	1C11H-22-TC
	7/8	0.875	22.23	151H-0028-TC	1C11H-0028-TC
	-	0.906	23.00	151H-23-TC	1C11H-23-TC
	29/32	0.906	23.02	151H-0029-TC	1C11H-0029-TC
	15/16	0.938	23.81	151H-0030-TC	1C11H-0030-TC
	-	0.945	24.00	151H-24-TC	1C11H-24-TC
2	-	0.976	24.79	152H-.976-TC	1C12H-.976-TC
	-	0.984	25.00	152H-25-TC	1C12H-25-TC
	1	1.000	25.40	152H-0100-TC	1C12H-0100-TC
	-	1.004	25.50	152H-25.5-TC	1C12H-25.5-TC
	1 - 1/16	1.063	26.99	152H-0102-TC	1C12H-0102-TC
	-	1.063	27.00	152H-27-TC	1C12H-27-TC
	-	1.102	28.00	152H-28-TC	1C12H-28-TC
	-	1.109	28.17	152H-1.109-TC	1C12H-1.109-TC
	-	1.122	28.50	152H-28.5-TC	1C12H-28.5-TC
	1 - 1/8	1.125	28.58	152H-0104-TC	1C12H-0104-TC
	1 - 5/32	1.156	29.37	152H-0105-TC	1C12H-0105-TC
2.5	1 - 3/16	1.188	30.16	152H-0106-TC	1C12H-0106-TC
	1 - 7/32	1.219	30.96	152H-0107-TC	1C12H-0107-TC
	-	1.220	31.00	152H-31-TC	1C12H-31-TC
	-	1.226	31.14	152H-1.226-TC	1C12H-1.226-TC
	-	1.231	31.27	152H-1.231-TC	1C12H-1.231-TC
	-	1.234	31.34	152H-1.234-TC	1C12H-1.234-TC
	1 - 1/4	1.250	31.75	152H-0108-TC	1C12H-0108-TC
	-	1.260	32.00	152H-32-TC	1C12H-32-TC
	1 - 5/16	1.313	33.34	152H-0110-TC	1C12H-0110-TC
	-	1.339	34.00	152H-34-TC	1C12H-34-TC
	1 - 3/8	1.375	34.93	152H-0112-TC	1C12H-0112-TC
-	1.378	35.00	152H-35-TC	1C12H-35-TC	

Half Series Inserts (0.5 / 1.5 / 2.5)

Half series holders are recommended when running carbide inserts toward the upper end of the series drill range, as well as in tougher applications requiring more insert support and holder strength.

NOTE: Only specified half series inserts should be used with half series holders.

1.330.343.4283

120 Deeds Drive
Dover, OH 44622
United States

www.alliedmachine.com

Allied Machine offers expert engineering support. Whether you need a quote, a test, or an application solution, a highly skilled and trained engineer is standing by, ready to help.

ext: 7611 | email: appeng@alliedmachine.com



ALLIED MACHINE & ENGINEERING