

## RV Leveling and Extension Systems: EcoCut

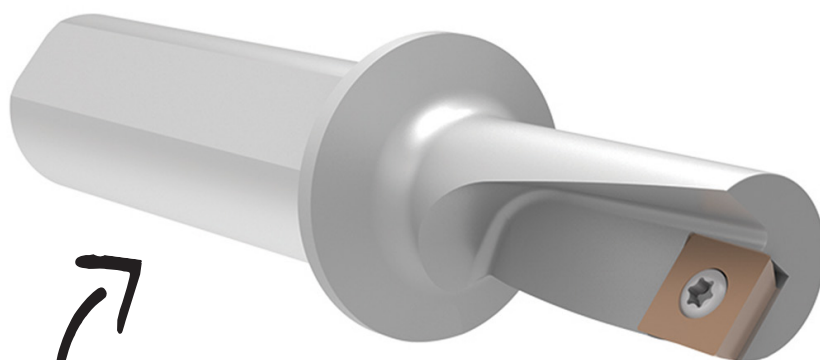
The customer manufactures RV leveling and extension systems using a Daewoo turning center with 8" chuck and 250 PSI water soluble oil coolant. The part being machined is an adapter for RV room extension rods made from wrought aluminum.

Unhappy with this process, the customer requested a solution to reduce cycle time and tooling costs.

The **EcoCut** accomplished this process using just one tool. The tooling saved the customer significant money and lowered the machine's cycle time.



	Measure	Competitor	EcoCut
		<b>4 Tool Process</b> <ul style="list-style-type: none"> <li>• Facing and turning tool</li> <li>• Rough drill</li> <li>• Flat bottom mill</li> <li>• Boring bar</li> </ul>	
<b>Product:</b> EcoCut <b>Objective:</b> Decrease cycle time <b>Industry:</b> Automotive <b>Part:</b> RV leveling and Extension Systems <b>Material:</b> Wrought aluminum	Cycle Time	45.73 sec	22.38 sec



51% cycle time decrease

► EcoCut  
 Insert: XCET 10T308FN-27P grade H216-T  
 Holder: EC 20R-1.5D 10E

The EcoCut provided:

- ✓ Reduced required tooling
- ✓ Decreased cycle time